

Floor plans of the characteristic building typologies in Cyprus

Period 1: Up to 1970

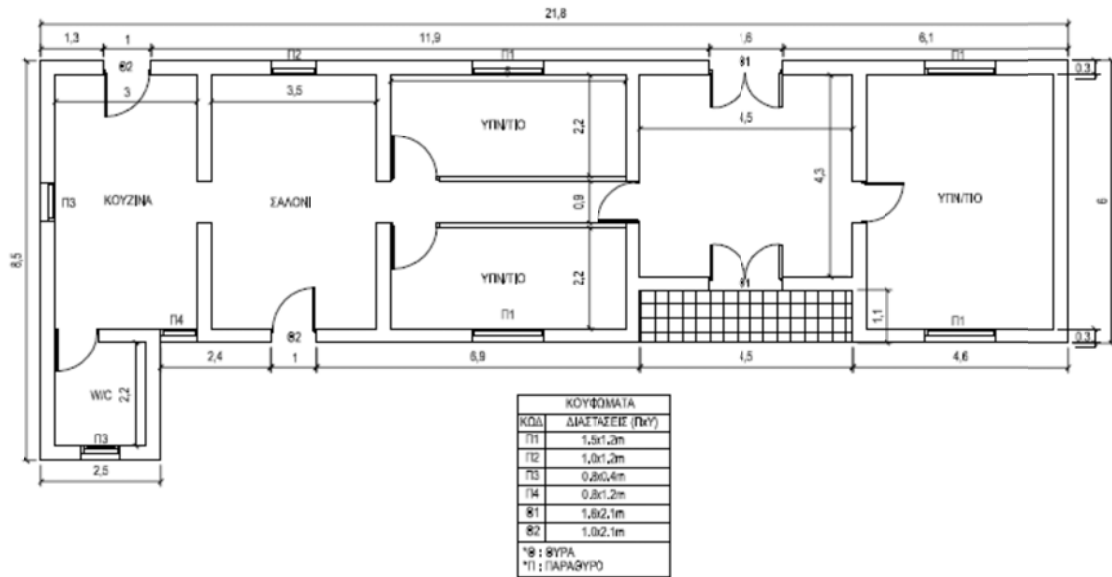


Figure 1: Floor plan of the typical single-family building

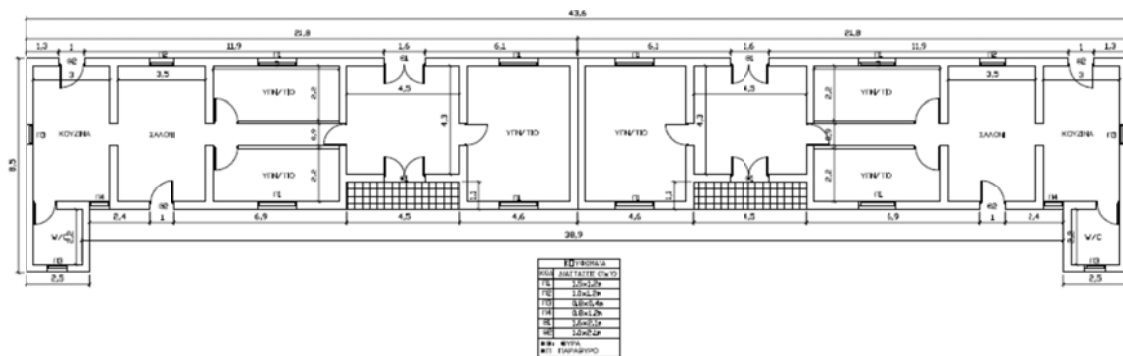


Figure 2: Floor plan of the typical building with two housing units

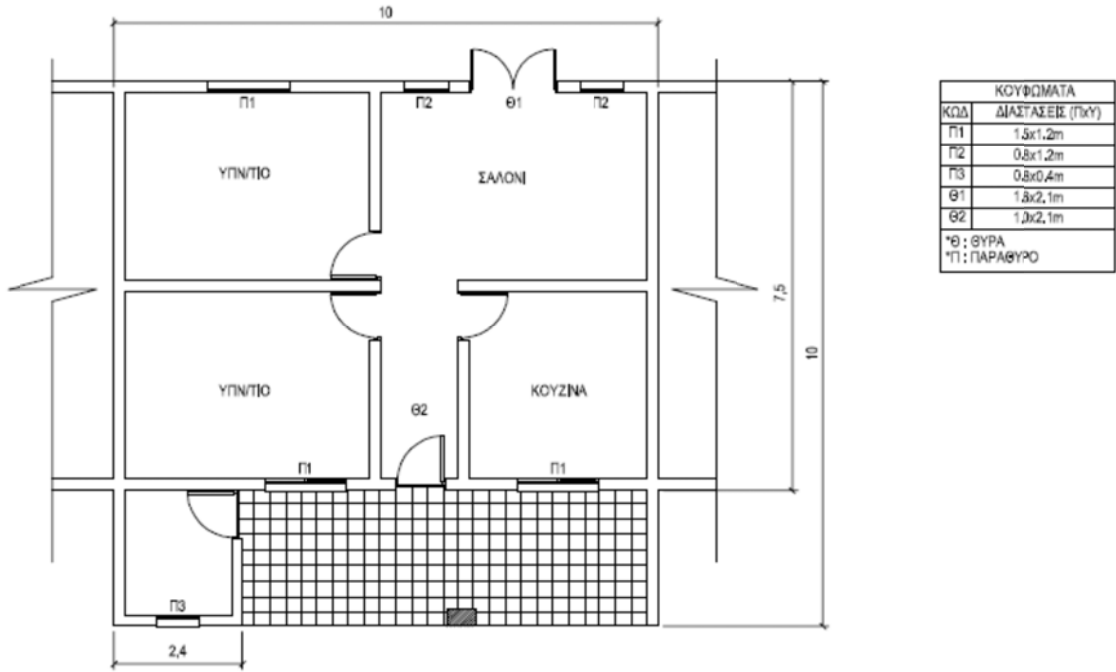


Figure 3: Floor plan of the typical building with more than two housing units

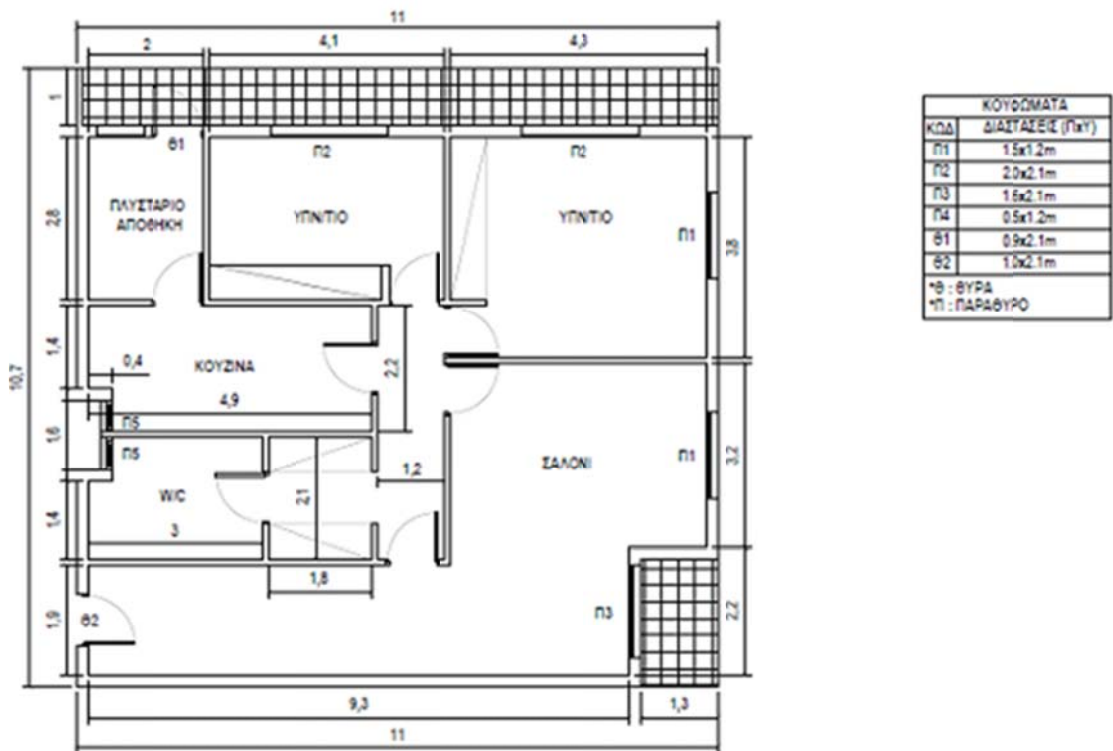


Figure 4: Floor plan of the typical multi-family building

Period 2: From 1971 up to 1990

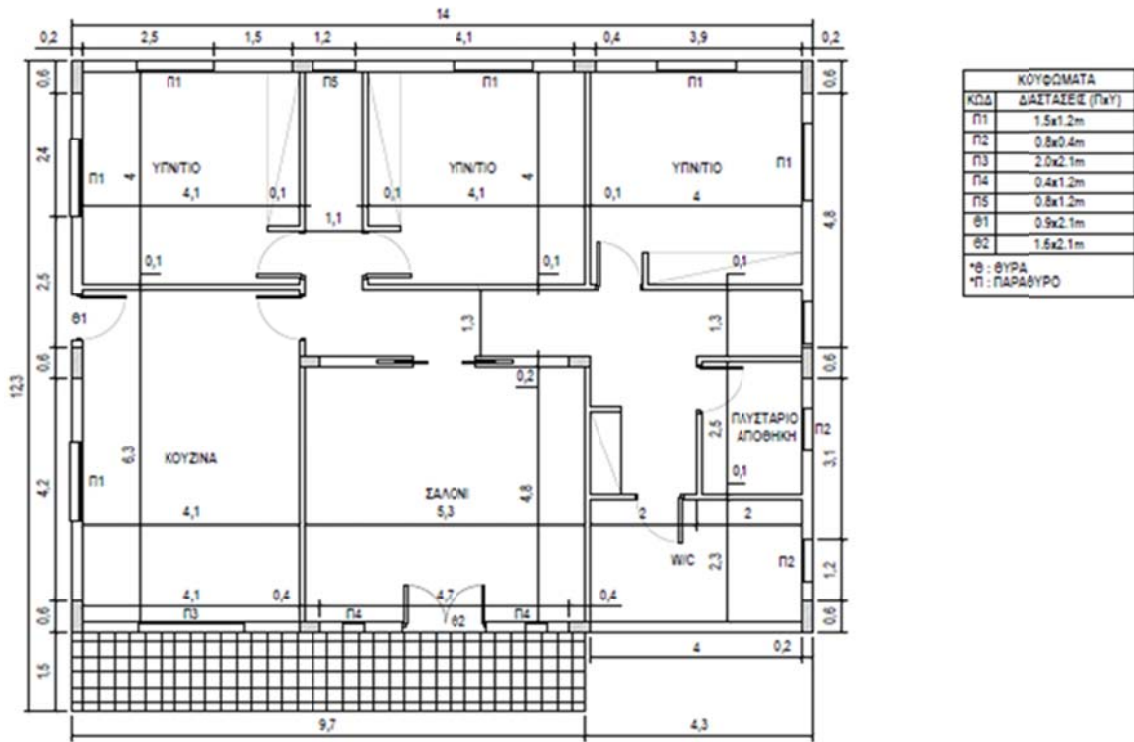


Figure 5: Floor plan of the typical single-family building

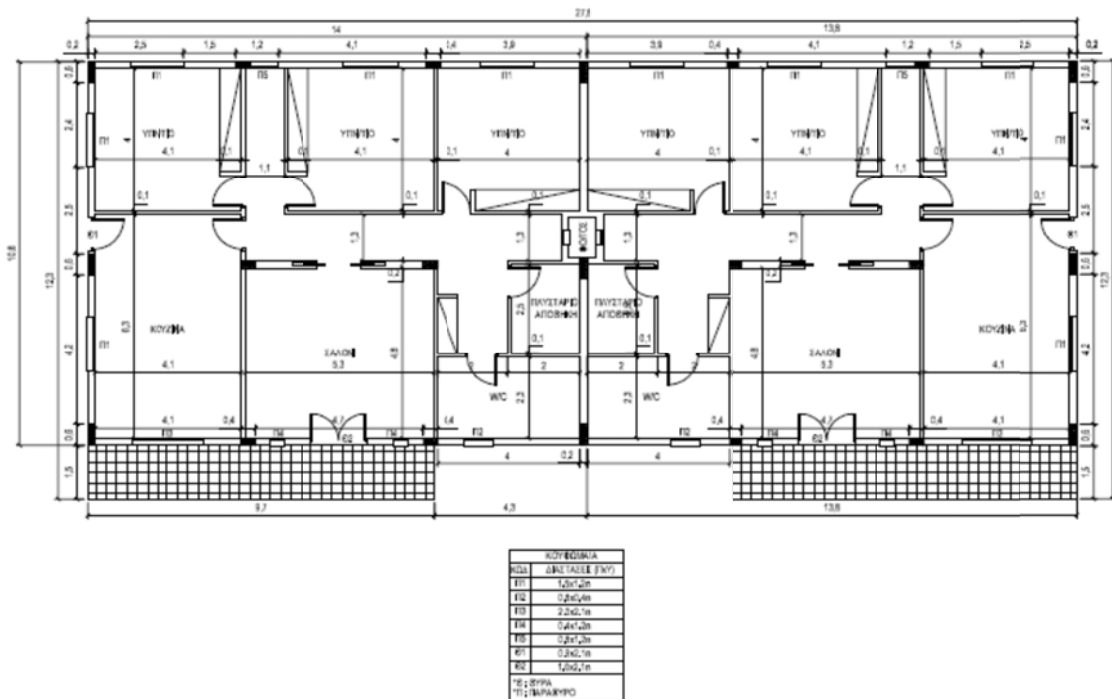


Figure 6: Floor plan of the typical building with two housing units

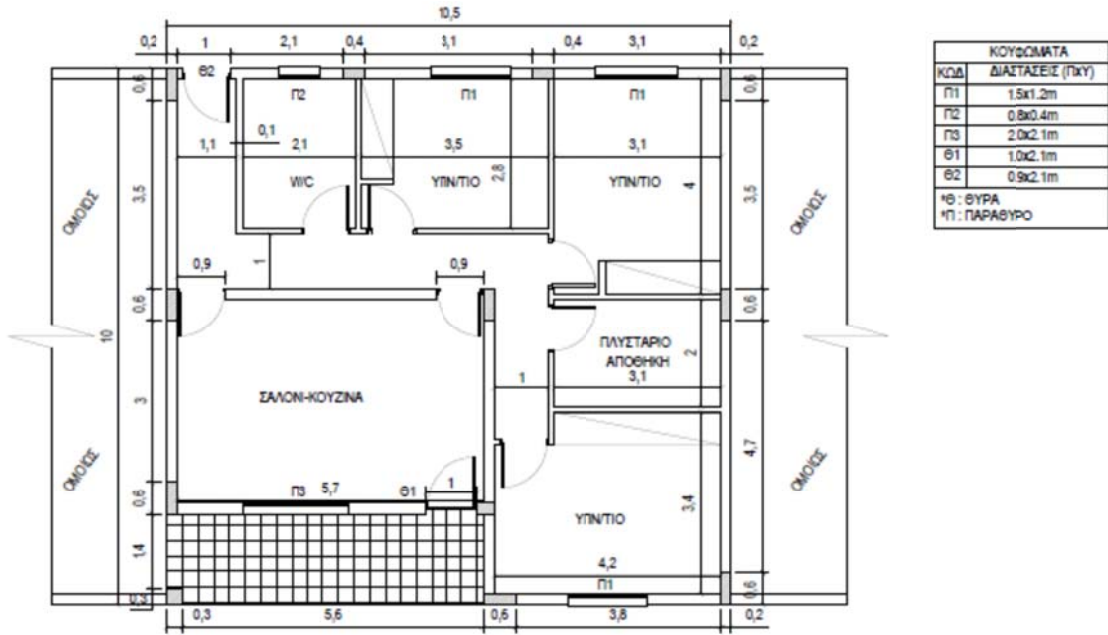


Figure 7: Floor plan of the typical building with more than two housing units

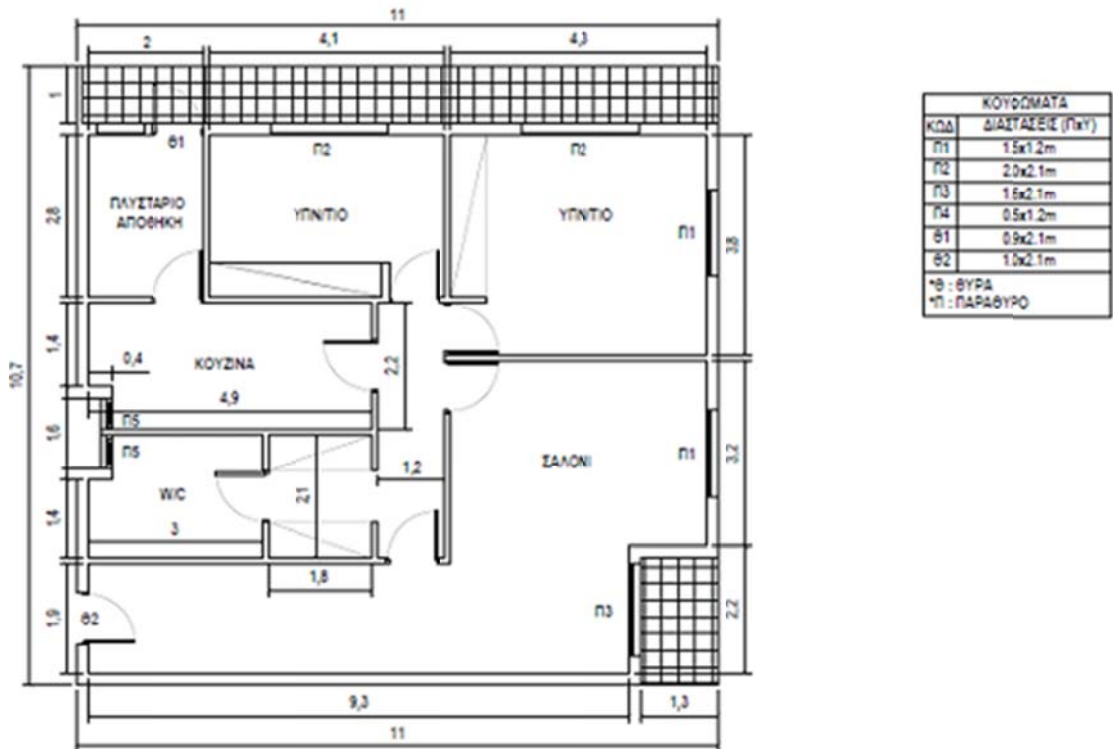


Figure 8: Floor plan of the typical multi-family building

Period 3: From 1991 up to 2007

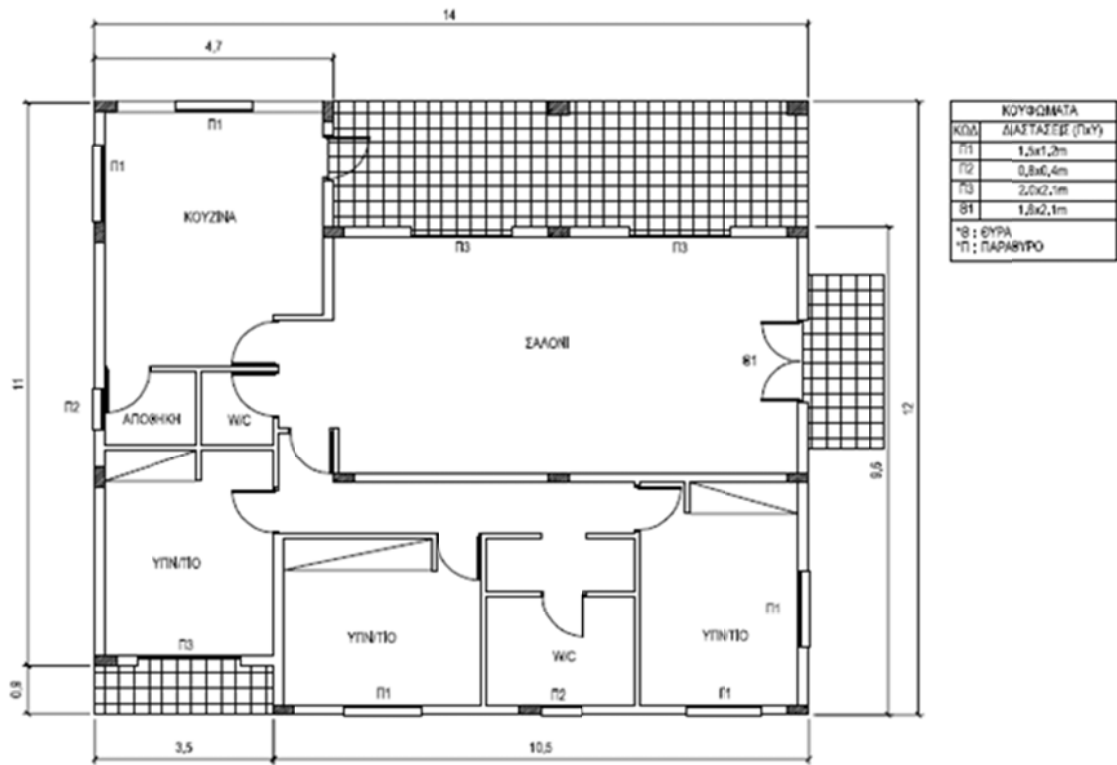
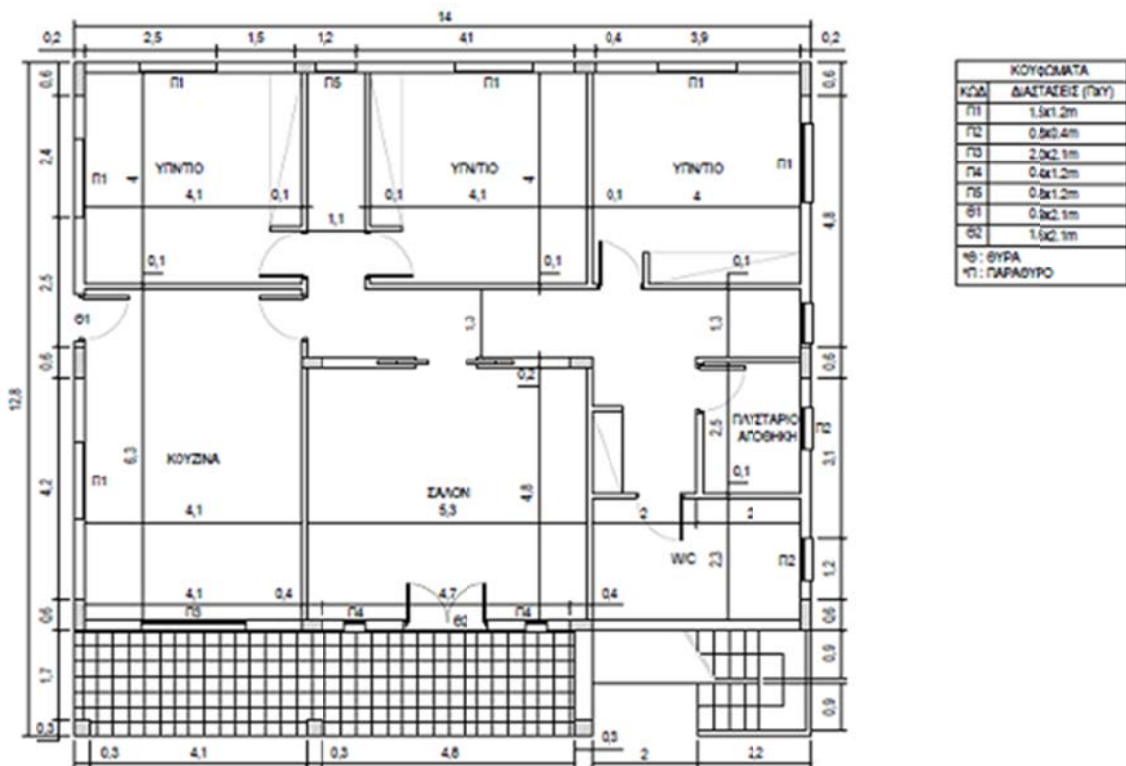
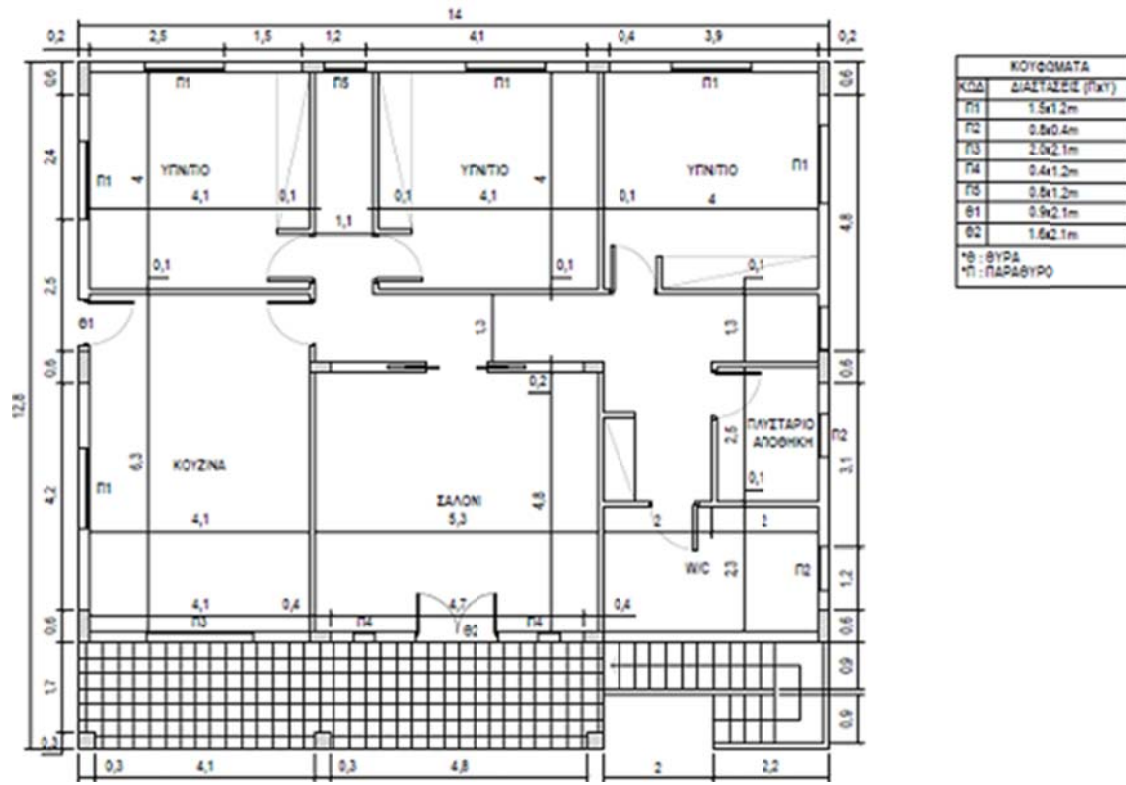


Figure 9: Floor plan of the typical single-family building



(a)



(b)

Figure 10: Floor plans of the typical building with two housing units, (a) ground level and (b) first floor

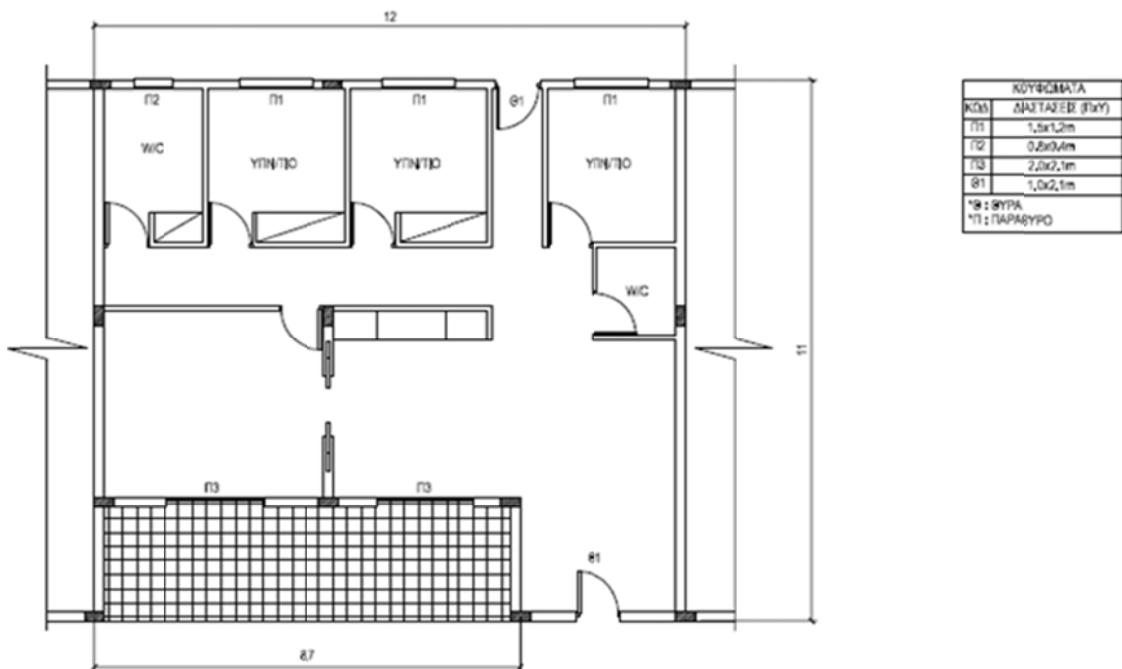


Figure 11: Floor plan of the typical building with more than two housing units

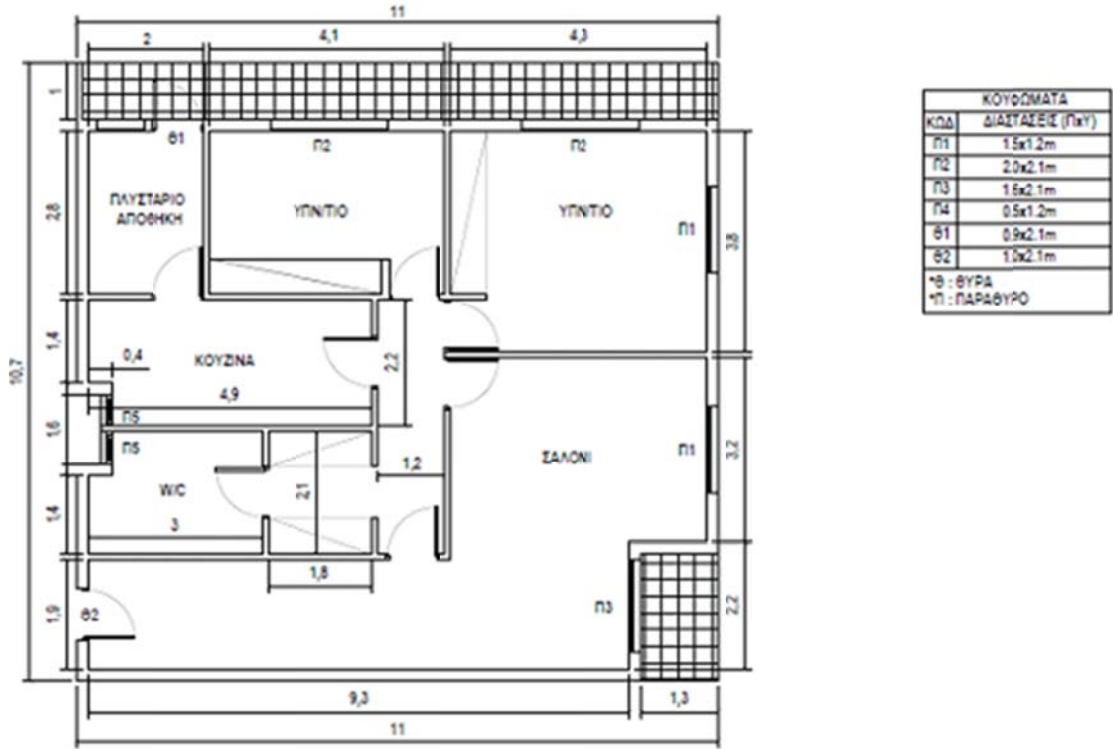
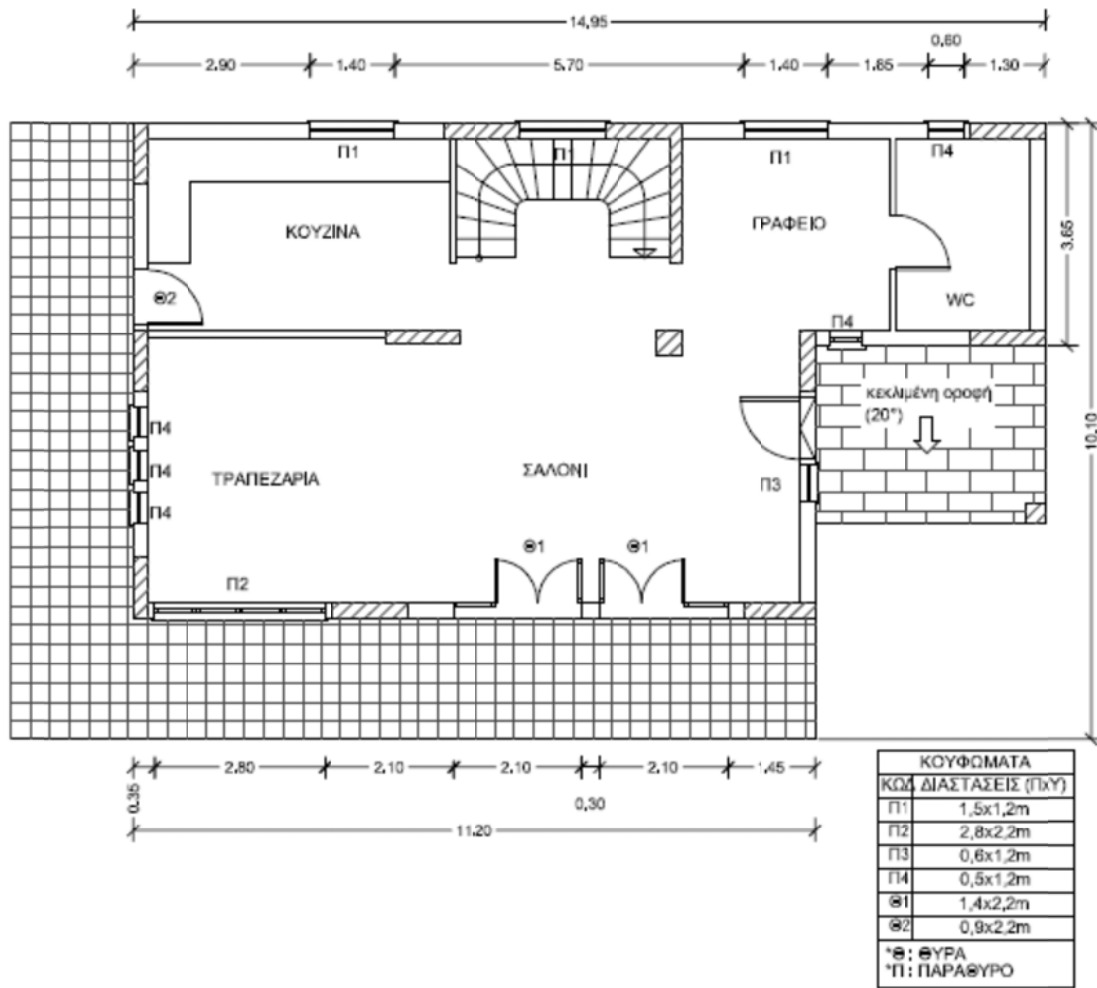
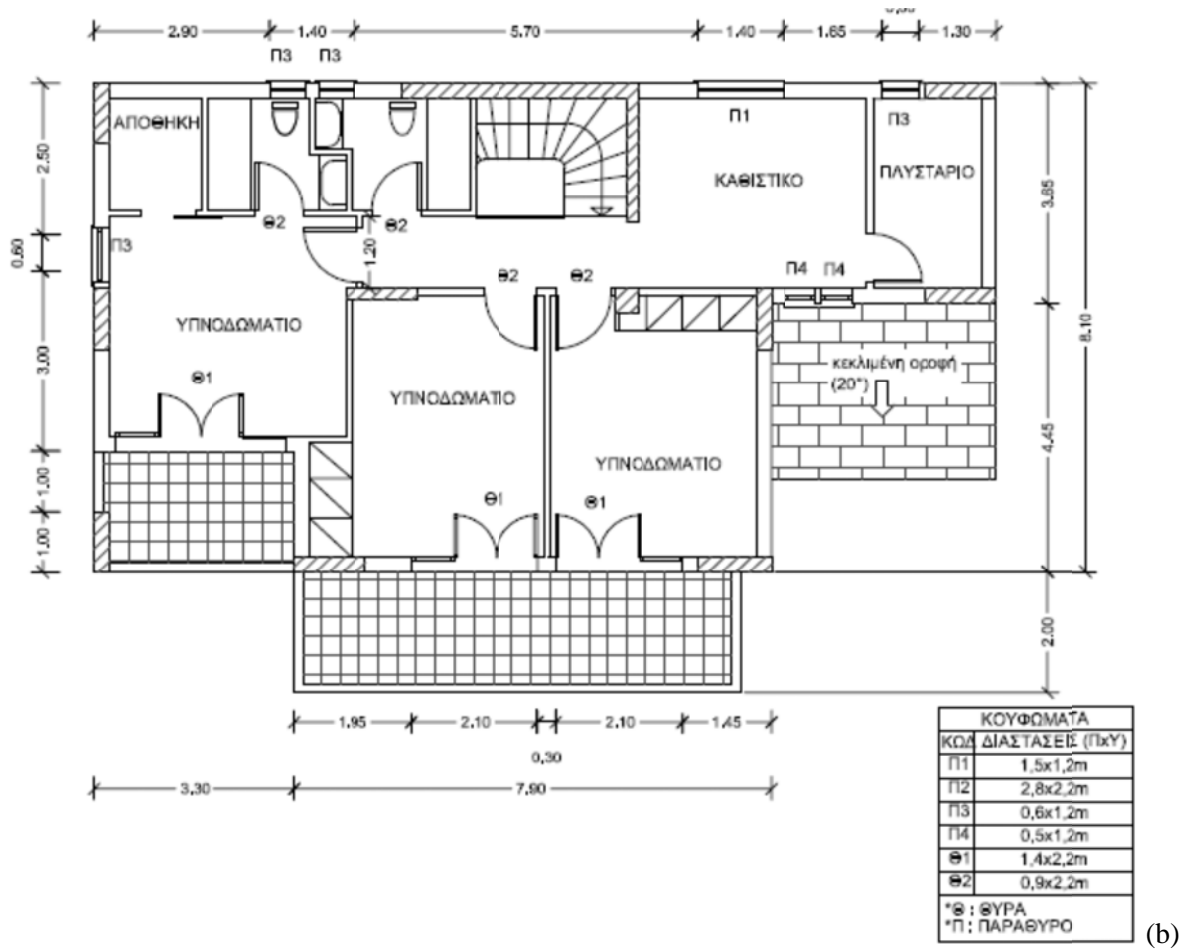


Figure 12: Floor plan of the typical multi-family building

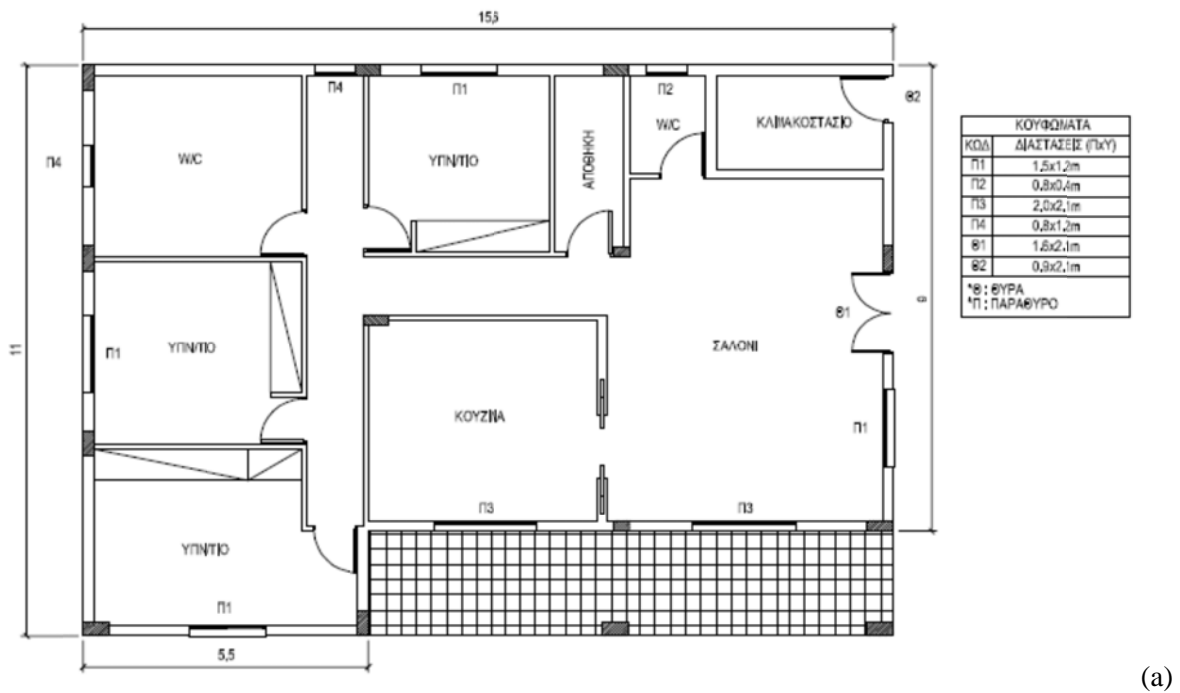
Period 4: From 2008 up to now

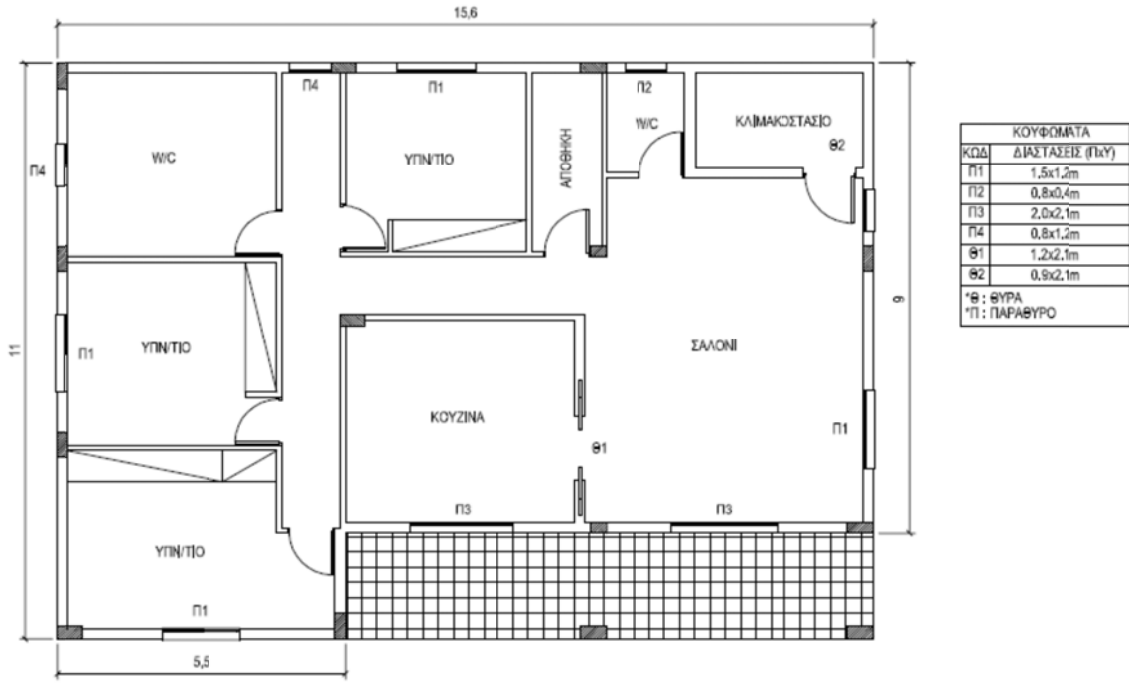


(a)



Σχέδιο 138: Floor plans of the typical single-family building, (a) ground level and (b) first floor





(b)

Figure14: Floor plans of the typical building with two housing units, (a) ground level and (b) first floor

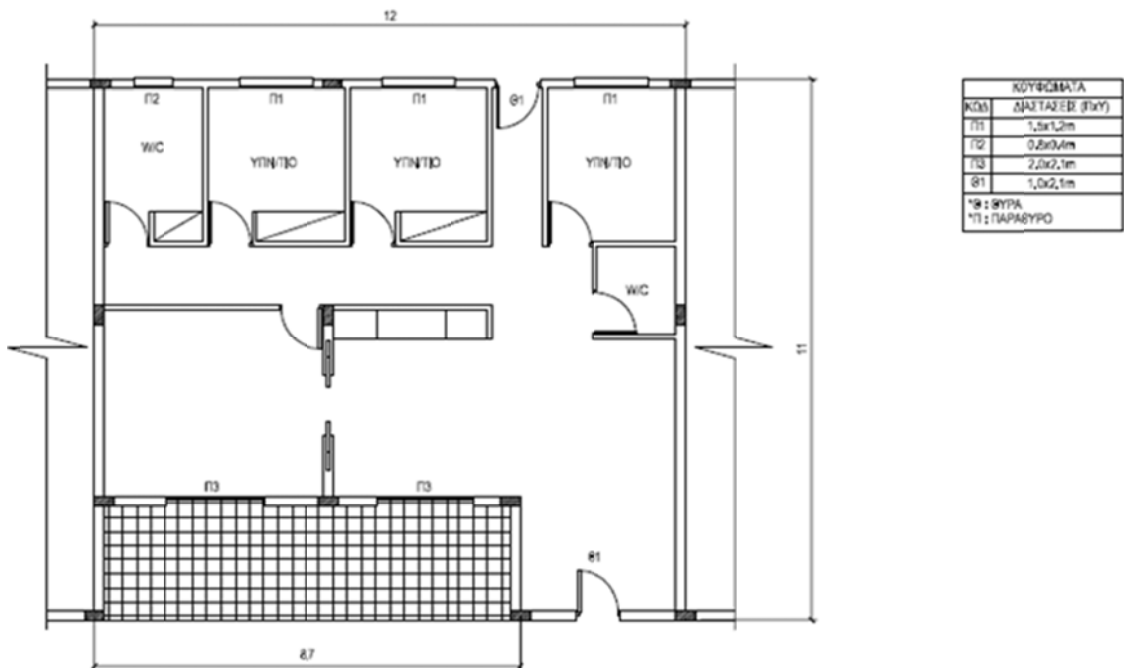
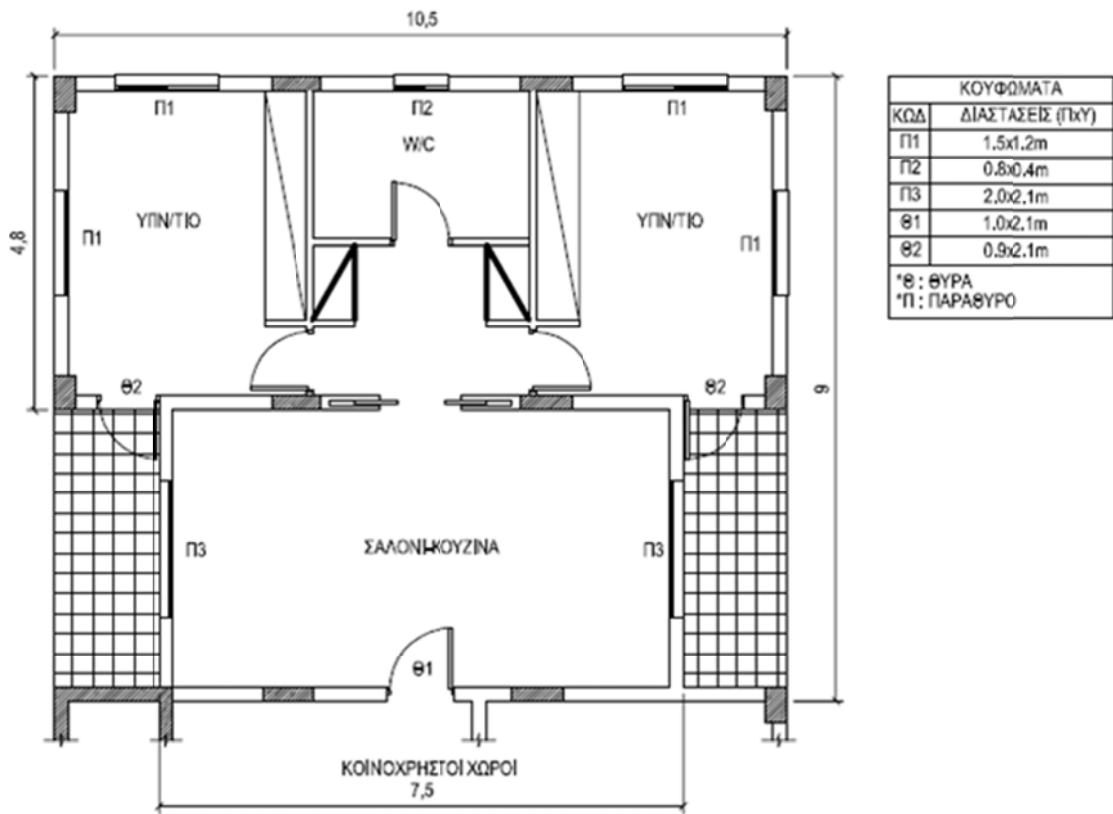


Figure 15: Floor plan of the typical building with more than two housing units



Σχέδιο 16: Floor plan of the typical housing unit in the multi-family building. Each floor includes two housing units.